

REGISTRATIONS and DELIVERIES



Source : ACEM



		2002			2003			2004			2005		
		MPs	MCs	Total	MPs	MCs	Total	MPs	MCs	Total	MPs	MCs	Total
Austria	AU	16.278	16.687	32.965	19.914	17.930	37.844	21.711	18.748	40.459	27.728	19.094	46.822
Belgium	BE	26.651	21.503	48.154	20.581	22.224	42.805	17.751	25.055	42.806	17.347	24.955	42.302
Bulgaria	BG												
Cyprus	CY	2.315	1.652	3.967	2.652	1.824	4.476	2.412	2.273	4.685	2.080	2.455	4.535
Czech Republic	CZ		7.880	7.880	7.724	5.959	13.683	6.903	7.217	14.120	8.017	7.592	15.609
Germany	DE	94.577	204.129	298.706	93.020	191.262	284.282	81.280	173.524	254.804	97.333	168.652	265.985
Denmark	DK	5.048	2.625	7.673	3.758	2.824	6.582	4.197	3.631	7.828	4.916	5.780	10.696
Estonia	EE		173	173		185	185		231	231		319	319
Greece	EL	20.221	56.069	76.290	20.921	59.137	80.058	21.856	72.023	93.879	24.107	83.078	107.185
Spain	ES	113.756	63.365	177.121	110.421	77.439	187.860	118.128	123.143	241.271	115.142	205.626	320.768
Finland	FI	8.835	4.920	13.755	12.751	6.264	19.015	17.808	7.835	25.643	20.895	9.228	30.123
France	FR	166.124	168.754	334.878	166.127	176.006	342.133	166.003	183.811	349.814	154.922	196.618	351.540
Croatia	HR		4.483	4.483		6.875	6.875		6.662	6.662		6.722	6.722
Hungary	HU		7.438	7.438		8.875	8.875		16.152	16.152		12.538	12.538
Ireland	IE	2.349	5.596	7.945	2.140	2.853	4.993	1.299	2.534	3.833	849	2.391	3.240
Italy	IT	166.755	392.763	559.518	161.893	408.617	570.510	132.367	421.489	553.856	128.284	420.478	548.762
Lithuania	LT	n.a.	793	793	n.a.	858	858	n.a.	1.101	1.101	n.a.	1.653	1.653
Luxembourg	LU	483	1.324	1.807	630	1.437	2.067	552	1.354	1.906	528	1.265	1.793
Latvia	LV		216	216		221	221	5.944	373	6.317	1.378	400	1.778
Macedonia	MK												
Malta	MT		551	551		508	508		473	473		408	408
The Netherlands	NL	53.857	16.845	70.702	45.878	16.737	62.615	39.131	17.566	56.697	40.858	16.814	57.672
Poland	PL	n.a.	n.a.		n.a.	1.300	1.300	n.a.	1.950	1.950	23.309	3.841	27.150
Portugal	PT	6.731	14.218	20.949	n.a.	11.198	11.198	n.a.	11.562	11.562	n.a.	11.232	11.232
Romania	RO	132.955	105.525	238.480	132.880	102.970	235.850	130.193	104.509	234.702	103.556	93.845	197.401
Sweden	SE	21.297	23.052	44.349	19.846	23.660	43.506	13.608	25.300	38.908	15.365	22.763	38.128
Slovakia	SK							1.763	1.165	2.928	2.037	1.165	3.202
Slovenia	SI	1.741	1.159	1.159	1.398	1.466	1.466	2.215	2.072	4.287	3.121	2.535	5.656
Turkey	TR		12.860	12.860		21.521	21.521		92.187	92.187		227.657	227.657
United Kingdom	UK	36.271	123.391	159.662	36.345	119.348	155.693	27.547	106.391	133.938	24.745	108.058	132.803
Total EU 15+12+3	Total	876.244	1.257.971	2.132.474	858.879	1.289.498	2.146.979	812.668	1.430.331	2.242.999	816.517	1.657.162	2.473.679
EU15	Total	739.233	1.115.241	1.854.474	714.225	1.136.936	1.851.161	663.238	1.193.966	1.857.204	673.019	1.296.032	1.969.051
EU12	Total	137.011	125.387	260.657	144.654	124.166	267.422	149.430	137.516	286.946	143.498	126.751	270.249
EU3	Total	0	17.343	17.343	0	28.396	28.396	0	98.849	98.849	0	234.379	234.379
Total EU 15+12+3	Control	876.244	1.257.971	2.132.474	858.879	1.289.498	2.146.979	812.668	1.430.331	2.242.999	816.517	1.657.162	2.473.679
Switzerland	CH	18.425	47.292	65.717	6.642	48.760	55.402	3.434	47.723	51.157	3.086	45.137	48.223
Iceland	IS												
Liechtenstein	LI												
Norway	NO	13.640	6.062	19.702	15.009	5.494	20.503	16.370	5.609	21.979	11.857	6.217	18.074
Total EFTA		32.065	53.354	85.419	21.651	54.254	75.905	19.804	53.332	73.136	14.943	51.354	66.297

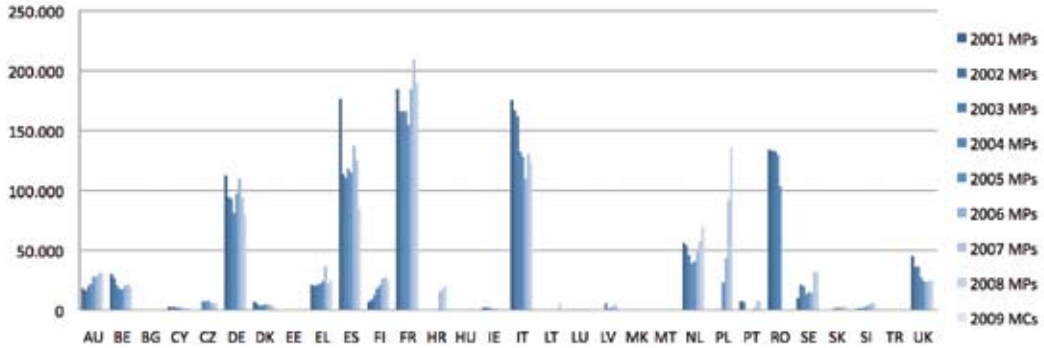
		2006			2007			2008			2009*		
		MPs	MCs	Total	MPs	MCs	Total	MPs	MCs	Total	MPs	MCs	Total
Austria	AU	28.292	18.873	47.165	30.933	23.748	54.681	30.970	24.480	55.450	25.184	23.364	48.548
Belgium	BE	20.279	27.269	47.548	21.434	30.131	51.565	19.620	26.393	46.013		25.379	25.379
Bulgaria	BG												
Cyprus	CY	1.739	2925	4.664	1.747	3710	5.457	1.731	4.459	6.190			
Czech Republic	CZ	6.079	8.423	14.502	6.121	9.985	16.106	5.707	9.641	15.348			
Germany	DE	109.906	165.842	275.748	94.215	166.883	261.098	79.560	166.281	245.841		135.335	135.335
Denmark	DK	4.462	7.578	12.040	4.518	9.777	14.295	3.670	6.692	10.362	16.027	5.171	21.198
Estonia	EE		771	771		1254	1.254		1.186	1.186			
Greece	EL	36.295	88.480	124.775	21.899	100.458	122.357	25.010	100.118	125.128		67.439	67.439
Spain	ES	137.460	258.355	395.815	125.862	269.479	395.341	84.222	209.941	294.163	43.954	133.768	177.722
Finland	FI	25.693	11.058	36.751	27.448	11.533	38.981	25.255	9.065	34.320			
France	FR	184.869	229.364	414.233	209.451	238.966	448.417	190.315	237.592	427.907	156.963	200.017	356.980
Croatia	HR	15.228	7.775	23.003	18.159	8.974	27.133	19.785	8.811	28.596			
Hungary	HU		12.048	12.048		12.781	12.781		12.285	12.285			
Ireland	IE	698	2.508	3.206	641	2.882	3.523	549	2.645	3.194	419	1.619	2.038
Italy	IT	109.850	444.987	554.837	130.696	435.959	566.655	123.110	408.249	531.359	99.761	404.767	504.528
Lithuania	LT	n.a.	2.457	2.457	n.a.	4.420	4.420	5.404	5.622	11.026			
Luxembourg	LU	657	1.378	2.035	604	1.417	2.021	677	1.353	2.030	296	1.636	1.932
Latvia	LV	2.507	773	3.280	4.389	1.530	5.919	3.730	1.568	5.298			
Macedonia	MK					3.272							
Malta	MT		423	423		532	532		576	576			
The Netherlands	NL	48.776	14.790	63.566	57.427	16.237	73.664	69.594	16.961	86.555	81.442	18.957	100.399
Poland	PL	43.570	5.115	48.685	91.913	7.574	99.487	135.994	10.696	146.690			
Portugal	PT	1.982	11.435	13.417	7.886	11.991	19.877	7.236	10.762	17.998	4.647	12.998	17.645
Romania	RO			0			0			0			
Sweden	SE	14.995	27.051	42.046	31.852	30.715	62.567	31.148	20.423	51.571		11.956	11.956
Slovakia	SK	2.577	2.122	4.699	3.017	3.144	6.161	2.616	3.139	5.755			
Slovenia	SI	4.689	3.598	8.287	5.735	5.061	10.796	5.860	5.296	11.156			
Turkey	TR		389.503	389.503		191.897	191.897		189.572	189.572			
United Kingdom	UK	23.550	109.527	133.077	24.562	119.863	144.425	24.953	114.474	139.427	13.636	81.064	94.700
Total EU 15+12+3	Total	824.153	1.854.428	2.678.581	920.509	1.724.173	2.641.410	896.716	1.608.280	2.504.996			
EU15	Total	747.764	1.418.495	2.166.259	789.428	1.470.039	2.259.467	715.889	1.355.429	2.071.318			
EU12	Total	61.161	38.655	99.816	112.922	49.991	162.913	161.042	54.468	215.510			
EU3	Total	15.228	397.278	412.506	18.159	204.143	219.030	19.785	198.383	218.168			
Total EU 15+12+3	Control	824.153	1.854.428	2.678.581	920.509	1.724.173	2.641.410	896.716	1.608.280	2.504.996			
Switzerland	CH	3.014	45.570	48.584	2.738	47.857	50.595	3.127	48.633	51.760			
Iceland	IS												
Liechtenstein	LI												
Norway	NO	11.020	7.764	18.784	10.534	9.591	20.125	11.438	10.137	21.575	8.801	5.301	14.102
Total EFTA		14.034	53.334	67.368	13.272	57.448	70.720	14.565	58.770	73.335			

* partial data for 2009. MCs: 15 countries; MPs: 10 countries

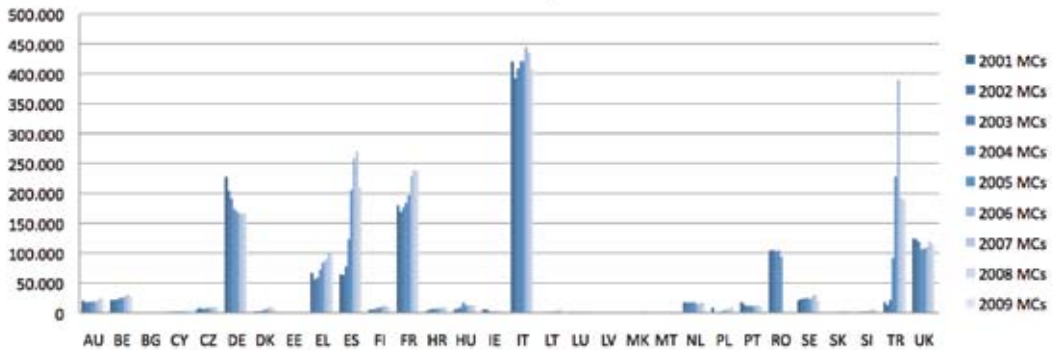


Registrations and deliveries evolution per country

Mopeds



Motorcycles



PTWs

