

Circulating park 2003-2006

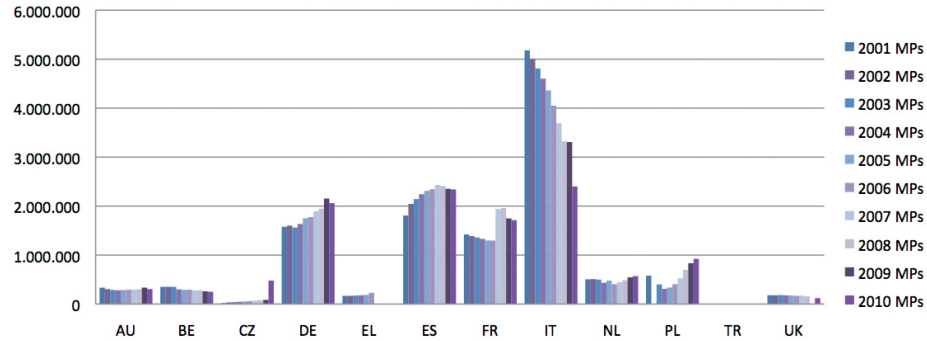
	2003			2004			2005			2006		
	MPs	MCs	Total	MPs	MCs	Total	MPs	MCs	Total	MPs	MCs	Total
Austria	286.919	305.481	592.400	280.993	315.638	596.631	285.194	326.286	611.480	290.157	338.721	628.878
Belgium	350.000	315.422	665.422	300.000	328.617	628.617	290.000	341.861	631.861	293.000	355.933	648.933
Bulgaria												
Cyprus	36.676	20.726	57.402	35.060	21.538	56.598	36.909	24.829	61.738	31.947	23.410	55.357
Czech Republic	39.225	751.634	790.859	45.223	711.336	756.559	52.806	741.194	794.000	60.879	761.824	822.703
Germany	1.561.258	3.744.971	5.306.229	1.634.584	3.827.899	5.462.483	1.749.957	3.902.512	5.652.469	1.776.321	3.969.103	5.745.424
Denmark	67.961	87.779	155.740	67.313	94.815	162.128	66.653	105.264	171.917	65.284	118.752	184.036
Estonia		8.100	8.100		9.100	9.100		10.200	10.200		12.600	12.600
Greece	174.013	707.369	881.382	178.637	714.549	893.186	185.851	720.352	906.203	230.000	838.922	1.068.922
Spain	2.143.593	1.513.526	3.657.119	2.242.046	1.612.082	3.854.128	2.311.773	1.805.827	4.117.600	2.343.124	2.058.022	4.401.146
Finland	115.712	129.670	245.382	129.017	142.703	271.720	145.318	156.487	301.805	166.160	172.283	338.443
France	1.357.000	1.091.000	2.448.000	1.330.779	1.131.083	2.461.862	1.297.698	1.177.608	2.475.306	1.295.316	1.248.245	2.543.561
Croatia		33.925	33.925		39.315	39.315	83.733	44.196	127.929	93.698	49.788	143.486
Hungary		103.488	103.488		114.033	114.033		122.705	122.705		130.117	130.117
Ireland		35.094	35.094		34.854	34.854		34.300	34.300		34.927	34.927
Italy	4.810.000	4.370.449	9.180.449	4.600.000	4.574.644	9.174.644	4.360.000	4.938.359	9.298.359	4.050.000	5.288.818	9.338.818
Lithuania		21.873	21.873		22.861	22.861		24.027	24.027		25.478	25.478
Luxembourg	18.721	13.380	32.101	23.007	13.901	36.908	23.471	14.268	37.739	24.029	14.607	38.636
Latvia		22.877	22.877	5.943	23.982	29.925	7.284	25.193	32.477	9.664	27.210	36.874
Macedonia		2.142	2.142		1.382	1.382		1.724	1.724		3.442	3.442
Malta		13.420	13.420		12.639	12.639		11.905	11.905		12.192	12.192
The Netherlands	499.000	516.567	1.015.567	434.000	536.934	970.934	478.000	552.949	1.030.949	403.506	616.282	1.019.788
Poland	400.451	845.456	1.245.907	309.866	835.790	1.145.656	337.511	753.648	1.091.159	405.917	784.176	1.190.093
Portugal	480.000	153.000	633.000	452.000	159.000	611.000	428.000	165.000	593.000	401.000	157.720	558.720
Romania	132.880	102.970	235.850	130.193	104.509	234.702	103.556	93.845	197.401	101.474	92.507	193.981
Sweden	144.000	247.129	391.129	152.000	283.691	435.691	72.000	321.944	393.944	150.000	245.039	395.039
Slovakia		48.709	48.709		51.977	51.977		56.366	56.366		58.101	58.101
Slovenia	30.344	12.048	42.392	28.626	11.574	40.200	34.198	14.473	48.671	34.392	18.801	53.193
Turkey		1.073.415	1.073.415		1.218.677	1.218.677		1.441.066	1.441.066		1.822.831	1.822.831
United Kingdom	182.476	1.131.503	1.313.979	177.448	1.160.888	1.338.336	173.644	1.193.500	1.367.144	166.500	1.209.700	1.376.200
Total EU 15+12+3	12.830.229	17.423.123	30.253.352	12.556.735	18.110.011	30.666.746	12.523.556	19.121.888	31.645.444	12.392.368	20.489.551	32.881.919
EU15	12.190.653	14.362.340	26.552.993	12.001.824	14.931.298	26.933.122	11.867.559	15.756.517	27.624.076	11.654.397	16.667.074	28.321.471
EU12	639.576	1.951.301	2.590.877	245.045	1.919.339	2.474.250	572.264	1.878.385	2.450.649	644.273	1.946.416	2.590.689
EU3	0	1.109.482	1.109.482	0	1.259.374	1.259.374	83.733	1.486.986	1.570.719	93.698	1.876.061	1.969.759
Switzerland	195.560	567.358	762.918	187.629	583.010	770.639	178.399	591.865	770.264	174.851	608.660	783.511
Iceland												
Liechtenstein												
Norway	140.796	98.800	239.596	144.855	103.716	248.571	148.161	109.338	257.499	151.670	116.875	268.545
Total EFTA	336.356	666.158	1.002.514	332.484	686.726	1.019.210	326.560	701.203	1.027.763	326.521	725.535	1.052.056
Total Europe	13.166.585	18.089.281	31.255.866	12.579.353	18.796.737	31.685.956	12.850.116	19.823.091	32.673.207	12.718.889	21.215.086	33.933.975

Circulating park 2007-2010

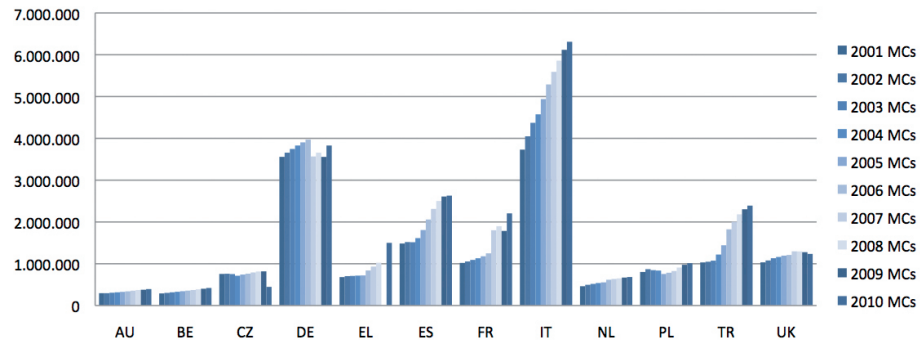
	2007			2008			2009			2010		
	MPs	MCs	Total	MPs	MCs	Total	MPs	MCs	Total	MPs	MCs	Total
Austria	295.871	354.919	650.790	302.592	372.112	674.704	335.212	376.880	712.092	303.908	392.806	696.714
Belgium	280.000	371.498	651.498	280.000	388.280	668.280	260.000	400.490	660.490	250.000	418.915	668.915
Bulgaria												
Cyprus	30.512	25.060	55.572	29.203	28.092	57.295	27.265	30.358	57.623	25.322	32.079	57.401
Czech Republic	70.136	789.995	860.131	78.863	813.933	892.796	85.770	817.576	903.346	478.184	446.107	924.291
Germany	1.895.486	3.566.122	5.461.608	1.947.063	3.658.590	5.605.653	2.153.200	3.556.348	5.709.548	2.059.679	3.827.894	5.887.573
Denmark	63.260	133.892	197.152	61.223	143.458	204.681	57.863	147.339	205.202	54.842	148.766	203.608
Estonia		14.780	14.780		17.622	17.622		18.626	18.626	16.378	19.671	36.049
Greece		931.527	931.527		1.023.619	1.023.619					1.499.133	1.499.133
Spain	2.430.414	2.311.346	4.741.760	2.410.685	2.500.819	4.911.504	2.352.205	2.606.674	4.958.879	2.339.203	2.628.656	4.967.859
Finland	188.388	188.144	376.532	215.165	203.698	418.863	238.174	215.157	453.331	258.241	225.504	483.745
France	1.939.000	1.801.000	3.740.000	1.959.000	1.898.000	3.857.000	1.748.000	1.784.000	3.532.000	1.713.000	2.205.000	3.918.000
Croatia	106.415	56.401	162.816	120.457	63.357	183.814	120.792	63.691	184.483	114.563	62.210	176.773
Hungary		135.865	135.865		141.540	141.540		141.956	141.956		142.251	142.251
Ireland		37.178	37.178		39.409	39.409		39.552	39.552		38.145	38.145
Italy	3.690.000	5.590.259	9.280.259	3.321.000	5.859.094	9.180.094	3.307.000	6.118.098	9.425.098	2.400.000	6.310.000	8.710.000
Lithuania	6.444	28.826	35.270	11.588	34.029	45.617	14.810	36.562	51.372	17.276	38.995	56.271
Luxembourg	24.532	14.946	39.478	25.107	15.177	40.284	25.569	15.551	41.120	26.339	15.753	42.092
Latvia	13.542	30.870	44.412	17.130	34.154	51.284	18.373	33.590	51.963	19.486	17.188	36.674
Macedonia		4.437	4.437		8.626	8.626		9.097	9.097		7.761	7.761
Malta		12.791	12.791		14.320	14.320		14.380	14.380		15.391	15.391
The Netherlands	445.140	634.135	1.079.275	486.940	649.967	1.136.907	545.058	668.000	1.213.058	569.035	681.843	1.250.878
Poland	525.484	825.305	1.350.789	698.172	909.144	1.607.316	833.817	974.906	1.808.723	922.126	1.013.014	1.935.140
Portugal	368.781	169.861	538.642		192.642	192.642	325.719	218.883	544.602	283.374	216.004	499.378
Romania			56.476			71.827				1.752	83.291	85.043
Sweden	85.088	259.114	344.202	92.808	269.298	362.106	91.677	320.681	412.358	78.806	277.940	356.746
Slovakia		63.897	63.897		70.318	70.318		55.443	55.443		59.563	59.563
Slovenia	37.331	34.162	71.493	40.384	41.612	81.996	42.243	46.185	88.428	42.322	48.686	91.008
Turkey		2.003.492	2.003.492		2.181.383	2.181.383		2.303.261	2.303.261		2.389.488	2.389.488
United Kingdom	170.742	1.296.488	1.467.230	157.524	1.294.480	1.452.004		1.275.600	1.275.600	118.605	1.234.400	1.353.005
Total EU 15+12+3	12.666.566	21.686.310	34.409.352	12.254.904	22.866.773	35.193.504	12.582.747	22.288.884	34.871.631	12.092.441	24.496.454	36.588.895
EU15	11.876.702	17.660.429	29.537.131	12.282.726	18.508.643	29.767.750	11.439.677	17.743.253	29.182.930	10.455.032	20.120.759	30.575.791
EU12	683.449	1.961.551	2.701.476	875.340	2.104.764	3.051.931	1.022.278	2.169.582	3.191.860	1.522.846	1.916.236	3.439.082
EU3	106.415	2.064.330	2.170.745	120.457	2.253.366	2.373.823	120.792	2.376.049	2.496.841	114.563	2.459.459	2.574.022
Switzerland	169.531	619.166	788.697	167.585	636.540	804.125	163.800	642.777	806.577	164.541	651.202	815.743
Iceland												
Liechtenstein												
Norway	156.287	126.207	282.494	161.662	134.721	296.383	165.557	141.235	306.792			
Total EFTA	325.818	745.373	1.071.191	329.247	771.261	1.100.508	329.357	784.012	1.113.369	164.541	651.202	815.743
Total Europe	12.992.384	22.431.683	35.480.543	13.607.770	23.638.034	36.294.012	12.912.104	23.072.896	35.985.000	12.256.982	25.147.656	37.404.638

Circulating park evolution per country

Mopeds



Motorcycles



PTWs

